

# ANPING LINKLAND

WIRE MESH PRODUCT CO., LTD



*Australia Temporary Fence*

## CATALOG

**2020/01**



Tel: 0086 311 88833097  
Mob: 0086 180 3291 2353



WhatsApp: 0086 180 3291 2353  
Skype: 0086 180 3291 2353



[www.linklandfence.com](http://www.linklandfence.com)  
[Veronica@linklandfence.com](mailto:Veronica@linklandfence.com)



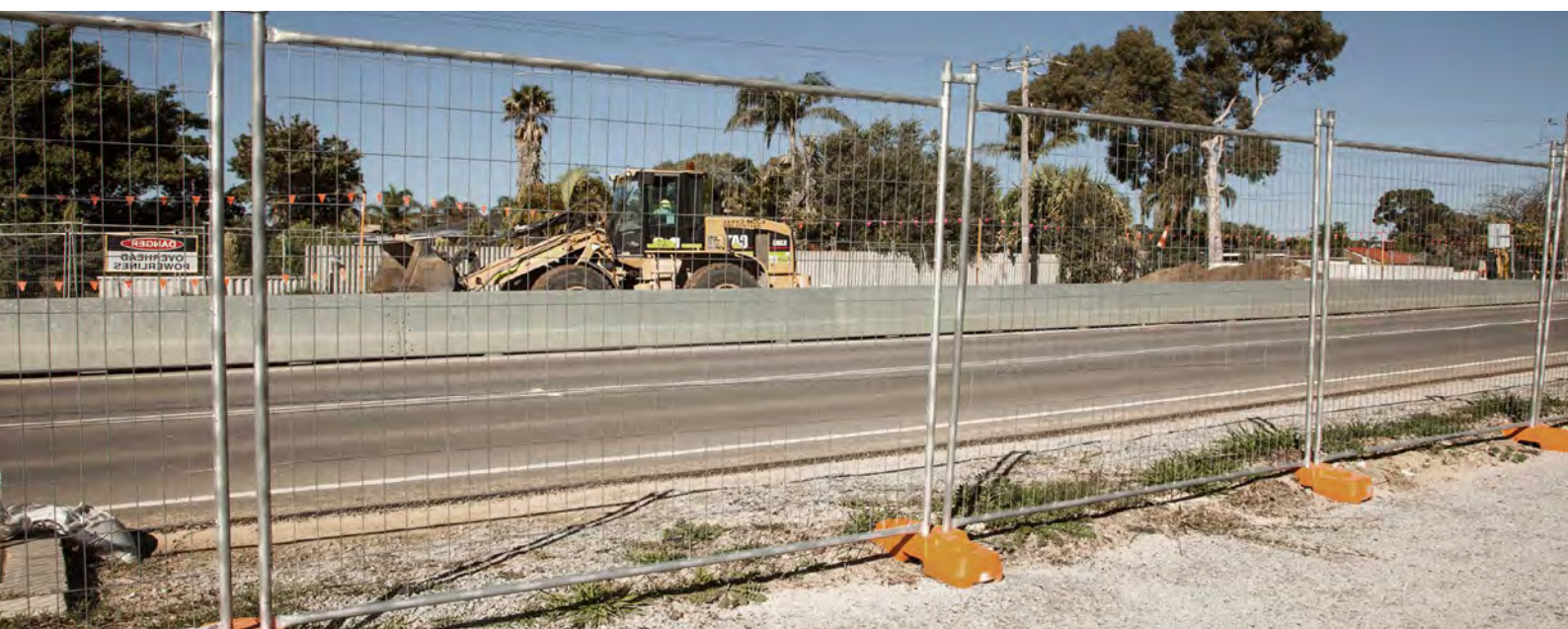


## Australia Temporary Fence

Australia temporary fence is a kind of temporary fence manufactured in accordance with Australian Standard AS 4687-2007 Temporary Fencing and Hoardings and is designed to withstand harsh Australian climates.

It is constructed by galvanized welded wire mesh and round tubes, which provides a smooth surface with excellent rust & corrosion resistance performance and a rigid structure that works well for years.

Australia temporary fence is an ideal choice for preventing unauthorized access and is widely used in infrastructure, civil, industrial, commercial & demolition sites, construction sites, accident spots and a wide range of major public events.





## Specification

**A Height:** 1800 mm, 2100 mm, etc.

**B Width:** 2100 mm, 2400 mm, 2900 mm, etc.

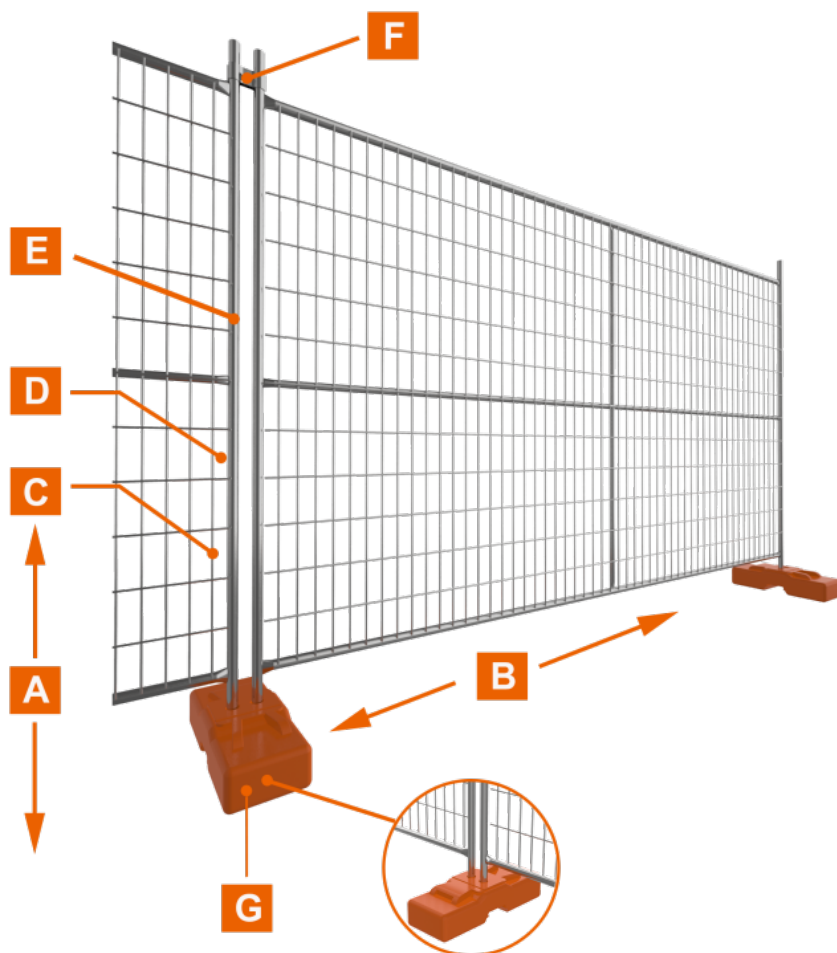
**C Wire Diameter:** 2.5 mm, 3.0 mm, 3.5 mm,  
3.8 mm, 4.0 mm, 5.0 mm

**D Mesh Opening:** 50 mm × 100 mm,  
50 mm × 150 mm, 75 mm × 100 mm,  
75 mm × 150 mm

**E Frame:** Round pipe (outside diameter 32  
mm, 38 mm, 40 mm, 42 mm, 48 mm)

**F Clamp:** metal clamp

**G Feet:** 580 mm x 245 mm x 130 mm,  
600 mm x 220 mm x 150 mm



- > Hot-dipped galvanized before welding forms a silver surface to protect the weld joints;
- > Other specifications are available upon request.





## Components & Accessories

The main component of Australia temporary fence is welded fence panels, panel clamps and plastic feet as shown below.

### Fence Panels

- ⊕ Fence panels
- ⊕ Fence panel installation



### Plastic Feet

- ⊕ Plastic feet
- ⊕ Plastic feet installation



### Panel Clamps

- ⊕ Fence clamps
- ⊕ Fence clamp installation



## Optional Accessories

### Braces & Shade Cloth

- ⊕ Braces
- ⊕ Shade cloth



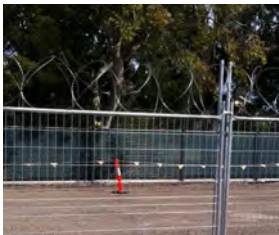
### Handrails & Dog Bars

- ⊕ Handrails
- ⊕ Dog bars



### Razor Wires & Warning Signs

- ⊕ Razor wires
- ⊕ Warning signs

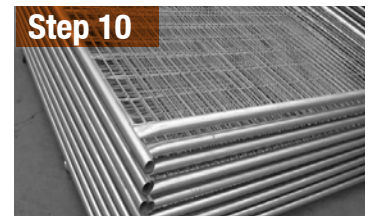
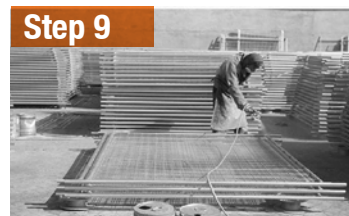
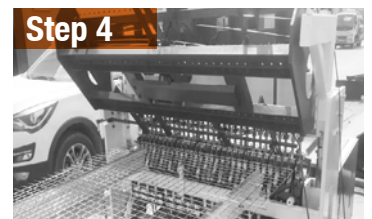




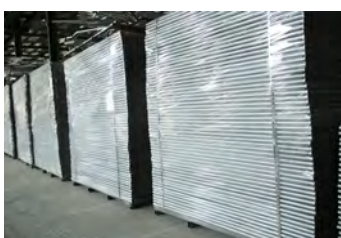


## Production Flow Chart

- + Step 1**  
.....  
Raw materials (galvanized steel wires)
- + Step 2**  
.....  
Raw materials (galvanized steel pipes)
- + Step 3**  
.....  
Steel wire straightening and cutting
- + Step 4**  
.....  
Wire mesh welding
- + Step 5**  
.....  
Pipe cutting
- + Step 6**  
.....  
Fence frame welding
- + Step 7**  
.....  
Temporary fence panel welding
- + Step 8**  
.....  
Temporary fence panel polishing
- + Step 9**  
.....  
Temporary fence panel spraying
- + Step 10**  
.....  
Finished Australia temporary fence panels



## Package & Delivery



**FENCE PANEL PACKAGE**



**PLASTIC FEET PACKAGE**



**FENCE DELIVERY**





## Features & Application

### Features

#### ⊕ Smooth and elegant appearance

The surface is well treated to eliminate all burrs for safe installation and removal.

#### ⊕ Full hand welding technology

This full welding technology provides a strong structure to extend its service life and prevent breakage.

#### ⊕ Excellent applicability

It can be placed on a variety of grounds including soil, sand, asphalt and concrete surfaces.

#### ⊕ Solid and strong base support

The concrete inside the plastic feet provide a solid and strong base support for the temporary fence.

#### ⊕ Easy installation and removal

All assemble and disassemble work can be done by one single person without digging holes, which saves both time and labor.

#### ⊕ Great cost effective

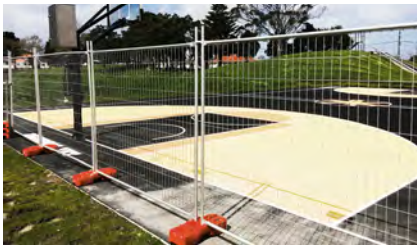
It can be installed and removed for many times and for different uses.

### Application

Australia temporary fence is widely used in infrastructure, civil, industrial, commercial & demolition sites, construction sites, accident spots and a wide range of major public events.



**GARDENS**



**BASKETBALL COURT**



**CONSTRUCTION SITES**



**ROADSIDE**



**PARKS**



**INDUSTRIAL SITES**



LINKLAND™

# ANPING LINKLAND

WIRE MESH PRODUCT CO., LTD



Weimin East Street, No. 69-70  
The Filter Industrial Park of Anping  
County, HEBEI, CHINA. 053600



Tel: 0086 311 88833097  
Mob: 0086 180 3291 2353



WhatsApp: 0086 180 3291 2353  
Skype: 0086 180 3291 2353



[www.linklandcn.com](http://www.linklandcn.com)  
[Veronica@linklandfence.com](mailto:Veronica@linklandfence.com)

